

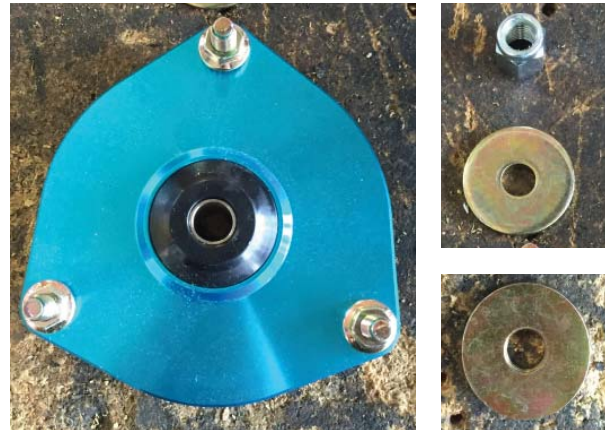


INSTALLING AEROSPORTS ON COILOVERS

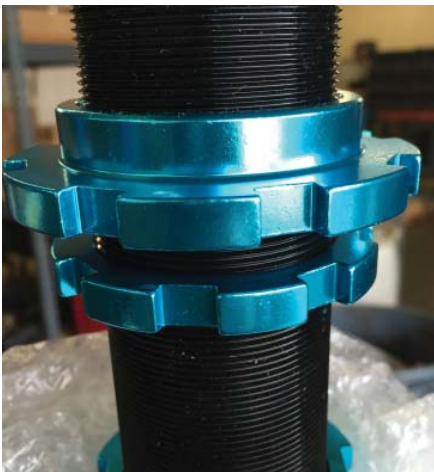
- 1** Using Allen wrench and Wrench remove the retaining nut



- 2** Disassemble upper strut mount portion from coilover. These pieces will be re-used



- 3** Loosen and remove Lower Spring Collar

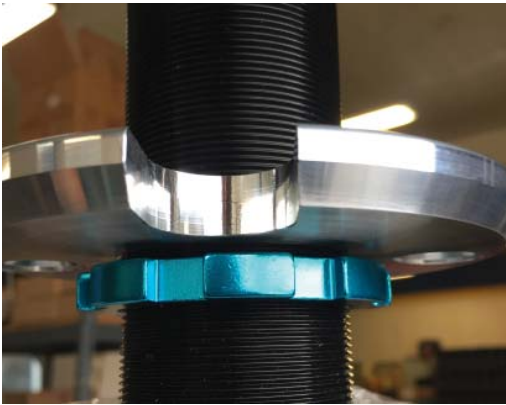


- 4** Remove Spring, Lower Spring Collar, Boot, Spring Isolators and Bump Stop

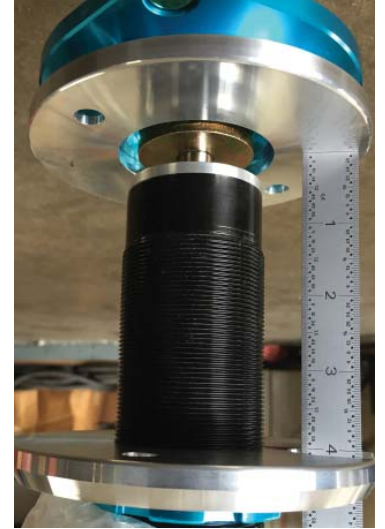




- 5** Loosely thread down lower bag plate



- 6** Loosely assemble upper strut mount and bag assembly. Then compress the shock and adjust lower perch so there is 4" between your bag plates



- 7** Lock down the lower spring perch to lower threaded bag mount



- 8** After 1 side is set perfectly, invert the other side and match the distance from the bag plate to the top of the shock body to insure both sides are the same



- 9** Install Air Fittings into the Bags. Hand tight and 1 turn with a wrench. **DON'T OVER TIGHTEN!**





10 Install Upper Bag Bracket



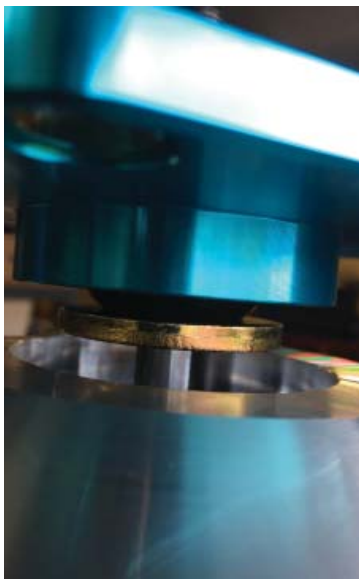
11 Install bag onto the lower threaded plate



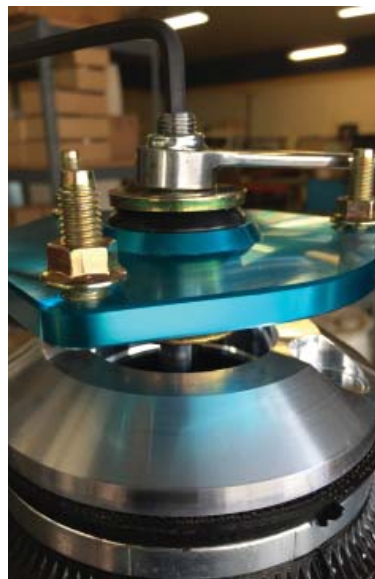
12 Install washer with groove facing downwards to the wire on the shock shaft



13 Reinstall upper strut mount without spring isolator



14 Tighten upper strut nut



15 Loosen lower lock ring and install strut on car. Fully compress the suspension and look at how it sits





Universal Air

SUSPENSION COMPANY

If the drop is insufficient, shorten the coilover by threading the shock body down into the lower mount by turning the entire bag/strut assembly.

If the drop is too much or the bag isn't fully compressed when the car is sitting at full drop height, lengthen the coilover by threading the shock body out of the lower mount by turning the entire bag/strut assembly.

If your car is McPhearson, where the bag sits directly above the tire, you must maintain clearance between the bottom of the bag and the top of the tire. Otherwise your bag will rub your tire and blow.

With the bag fully compressed, inspect all angles of the bag to ensure the bag won't come in contact with any portion of the suspension as its cycled. If the bag rubs against something it will need to be addressed, or the bag will blow.

This Bag is adjusted properly.
Bellows are flush with upper/lower caps



This Bag is not fully compressed.
Bellow isn't flush with caps of the bag

